



Oak Lodge School
0208 444 6711
info@oaklodge.barnet.sch.uk

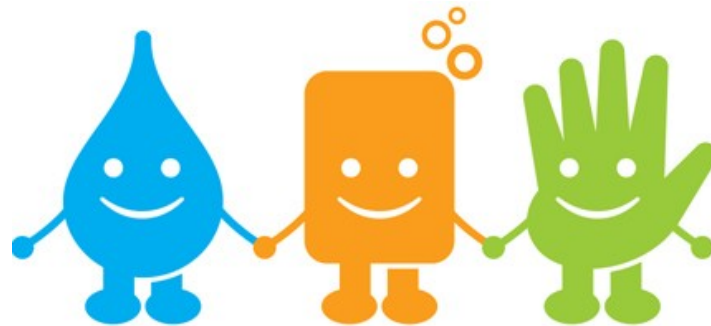
Have you received the Newsletter by email? Help us save paper with an email address!

Volume 1
Issue 6

14th October, 2011

Global Handwashing Day

Tomorrow 15th October is Global Handwashing Day. L1 L2 L4 and L5 have been learning about the importance of good hygiene and had lessons in handwashing technique.



From the Head Teacher

Reminders

Transition Information Coffee Morning – Tuesday 18th October 9.15-11.15 at the school. We will have representatives from many agencies across the borough to give you information about Transition from school to college/training schemes.

If you buy goods from Amazon please use the link on the Hearts of Oak Web site. www.hearts-of-oak.org and click on the Amazon link- we will then get 5% of any purchase you make at no additional cost to you.

Help us to celebrate the 5th Anniversary of Hearts of Oak by coming along to The Phoenix Theatre in East Finchley on Sunday 4th December at 10.00 to see Polar Express- more details to follow.

School will be closed the week beginning 24th October for half term. School re-opens for the students on Monday 31st October.

Lynda Walker



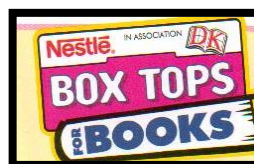
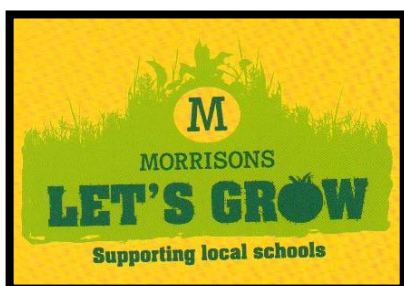
Miss Cseko and Miss Amdurer went to collect The International School Award this week. Well done to the whole school for getting involved with international activities throughout the year!

This week, L3 Class have been digging deeper (pardon the pun...) into the book **Holes**, by Louis Sachar. Exploring the text they have been learning about actions and consequences, and also about fate and what can shape our destiny. Our Data Handling topic in Maths is coming to an end and the children will be re-viewing the merits of sound surveying and displaying what they have found in many forms.

P1 had a great day at Madame Tussauds as part of their Tourism course. We saw lots of famous faces, had a taxi ride back in time and experienced the amazing 4D show.



The winter flu season is upon us again. Seasonal flu is caused by some highly infectious viruses that usually occur in winter. The vaccine is changed each year to match the current viruses. Some people are more susceptible to the effect of seasonal flu than others. People with a heart problem, a breathing difficulty including asthma, a kidney disease, lowered immunity, liver disease, diabetes, neurological condition or a problem with their spleen are particularly at risk. The seasonal flu vaccination is available from your G.P. If you feel your child falls into a high risk group please contact your doctor.



Let's Get Shopping

We are collecting Morrison vouchers towards gardening equipment and Nestle Box Tops for books. Please support us by collecting for our school.